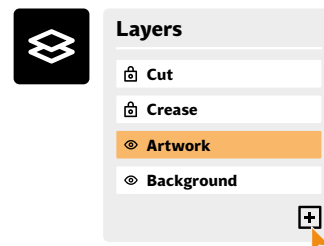


FINAL CHECKLIST [DIGITAL]

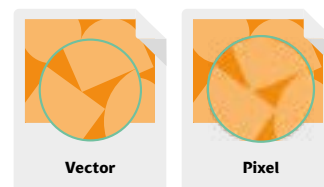
Thank you for choosing to work with us, in order to make the artwork process as efficient as possible we ask that you check the following details before supplying your artwork to us. If you have any queries please ask, and we will be happy to help.



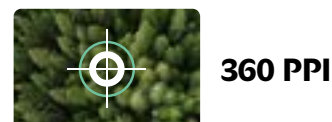
ARTWORK FILE IS LAYERED WITH SENSIBLE & MEANINGFUL NAMES



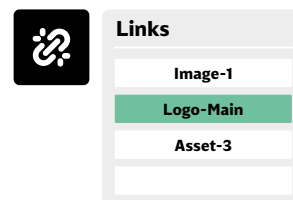
ARTWORK IS SUPPLIED AS VECTOR GRAPHICS AS MUCH AS POSSIBLE



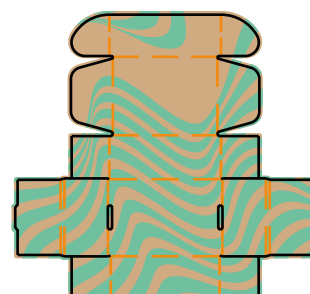
ALL RASTER IMAGES OR NON-VECTOR ARTWORK ARE 360 PPI



ALL LINKED FILES & IMAGES ARE EMBEDDED OR SUPPLIED



THERE IS 5MM OF BLEED AROUND THE DIELINE AND OVER CRITICAL CREASES



ARTWORK DESIGN

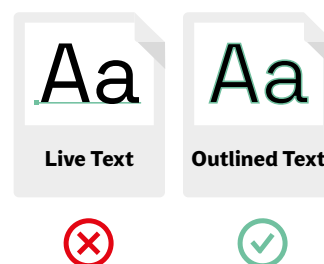


ALL TEXT IS GREATER THAN OR EQUAL TO THE MINIMUM

	100% K	CMYK
POSITIVE	6pt	8pt
REVERSE	7pt	8pt



ALL TEXT IS OUTLINED OR FONT FILES ARE SUPPLIED



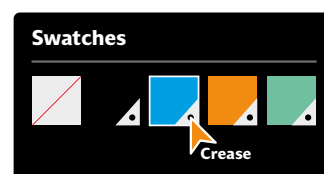
ALL STROKES ARE GREATER THAN OR EQUAL TO THE MINIMUM

	100% K	CMYK
POSITIVE	0.3pt	0.5pt
REVERSE	0.5pt	0.5pt



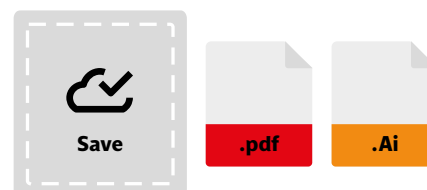
ARTWORK IS SUPPLIED WITH PROCESS COLOURS (CMYK) OR PANTONE (C/U/CP/UP) SPOT COLOURS

PLEASE DO NOT SUPPLY COATED PANTONE REFERENCES FOR JOBS ON UNCOATED BOARD OR UNCOATED PANTONE REFERENCES FOR JOBS ON COATED BOARD



ARTWORK FILE IS SAVED AS ADOBE ILLUSTRATOR OR PDF FORMAT

IF SAVING AS A PDF, PLEASE USE THE ADOBE ILLUSTRATOR DEFAULT PRESET TO AVOID COMPRESSION AND KEEP LAYERS INTACT



Packaging your illustrator file by selecting **FILE > PACKAGE** will ensure you supply us with all the files and fonts in your artwork. See the below link:

<https://helpx.adobe.com/uk/illustrator/using/package-files.html>